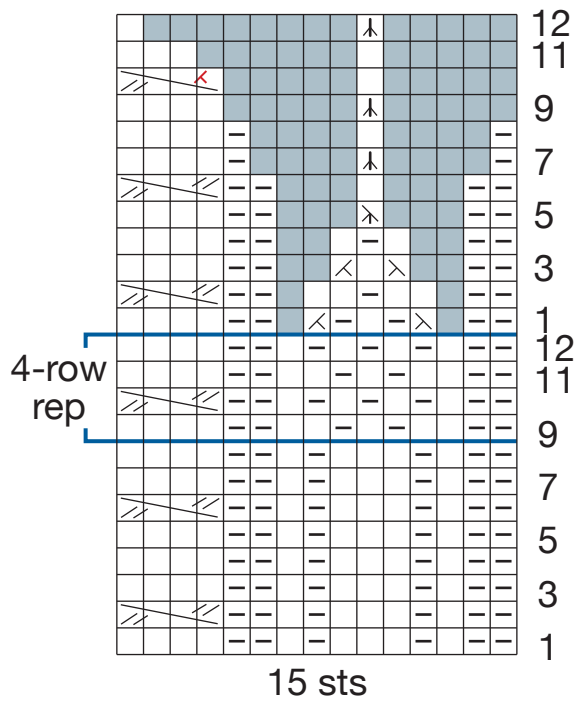


## Revised Hat Chart

### HAT CHART



### STITCH KEY

- K on RS, p on WS
- P on RS, k on WS
- Wyib Sl on RS,  
wyif Sl 1 on WS
- Yarn over
- Ssk
- K2tog
- P2tog
- Sk2p
- S2kp
- No stitch
- 4-st LC
- LC & Dec