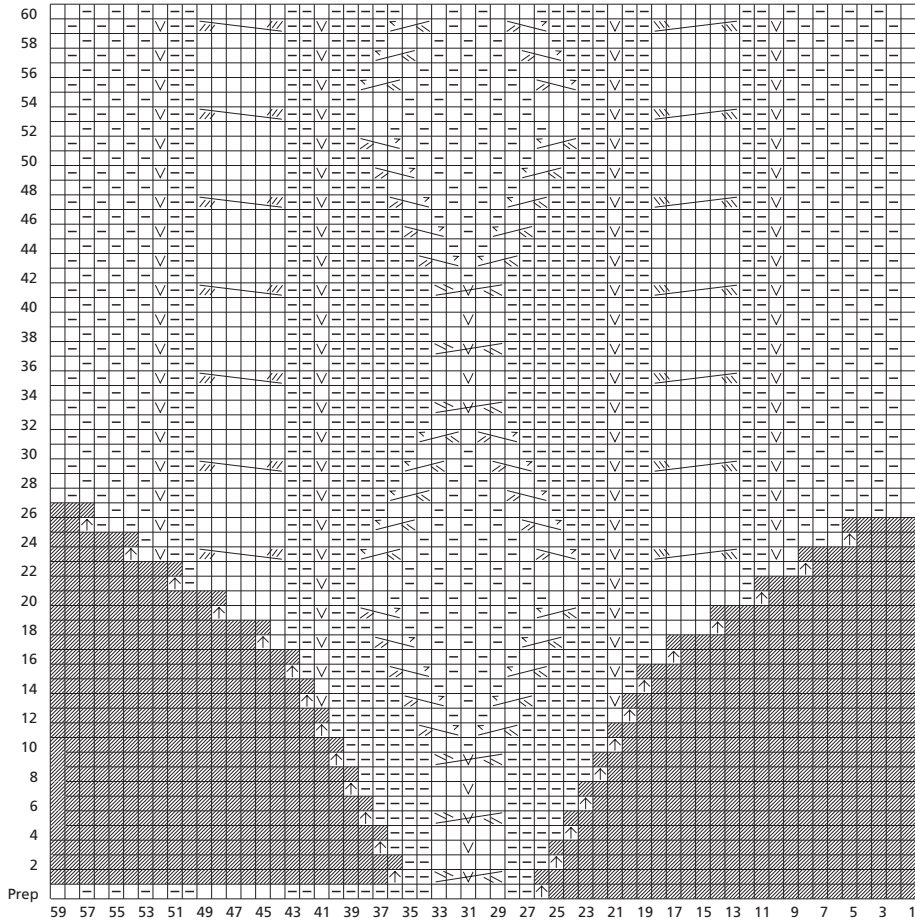


SHAWL COLLAR CABLE SCARF



Stitch Key

- K on RS, p on WS
- ▢ P on RS, k on WS
- ∇ Slip 1 purlwise
- ▨ No stitch
- ⊕ Turn
- ▧ 3-st RPC
- ▩ 3-st LPC
- 5-st RC
- 6-st RC
- ▬ 6-st LC